



**FitnessExpert** Services Limited

Your fitness parts & products superstore

體適能健身設備服務有限公司



BS-2000/5000/  
7000/8000 series

# BS Rubber Tiles



## BS Rubber Tiles

BS-2000



BS Rubber Tiles are designed to attenuate the shock of people falling from a certain height and reduce the risk of injury.

The material composition of recycled rubber and EPDM flecks makes them elastic, anti-slip and durable, fitting for both indoor and outdoor applications.

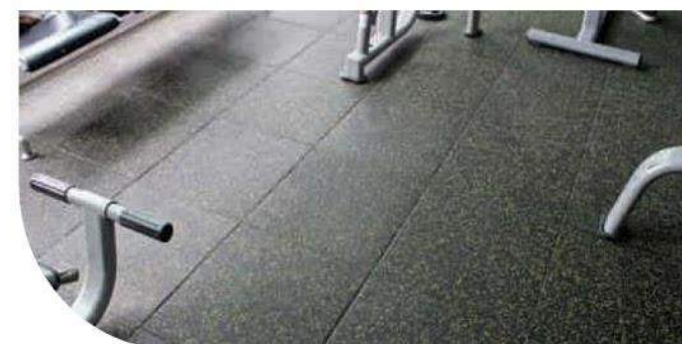
They are your ideal choice for a safer surface in gyms, playground and kindergarten, benefit you with effective cost, and convenient installation with plastic connectors.



Bottom layer



Plastic connector



### Applications

- Gyms
- Playground
- Kindergarten

### Features & Benefits

- Weather proof
- Wear resistant
- Slip resistant
- Shock absorbent
- Environmentally safety

### Specifications

Material: PU binder, Recycled rubber & Synthetic EPDM  
Color: Variety of colors  
Tolerance: Width&Length  $\pm 1.5\%$ ; Thickness  $\pm 2\text{mm}$

### Rubber Tiles Specifications

| Product Series | BS-2000 Series M       | BS-3000 Series M | BS-5000 Series M | BS-7000 Series M | BS-8000 Series M | Bottom Style |
|----------------|------------------------|------------------|------------------|------------------|------------------|--------------|
| Thickness      | 500*500mm / 1000*500mm |                  |                  |                  |                  |              |
| 20 mm          | ✓                      |                  | ✓                | ✓                | ✓                |              |
| 25 mm          | ✓                      |                  | ✓                | ✓                | ✓                |              |
| 30 mm          | ✓                      |                  | ✓                | ✓                | ✓                |              |
| 35 mm          | ✓                      |                  | ✓                | ✓                | ✓                |              |
| 40 mm          | ✓                      |                  | ✓                | ✓                | ✓                |              |
| 45 mm          | ✓                      |                  | ✓                | ✓                | ✓                |              |
| 50 mm          | ✓                      |                  | ✓                | ✓                | ✓                |              |





## Treadmill mat

BS-2000/3000/  
5000/7000 series



Berson treadmill mat can be supplied in different sizes and thickness to fit your applications for spinning, treadmill, cross trainer and so on, giving good protection for your floors and allowing for differences in floor and equipment balance levels.

### Features & Benefits

- Anti-slip
- Sound & shock absorbent
- Protection for floor and machine

### Specifications

Material: PU binder, Recycled rubber & Synthetic EPDM  
Color: BS-2000/3000/5000/7000 series  
Thickness: 2.5~10mm  
Size: 2m\*1m, or customized sizes

## Roll out ladder

BS-2021



The Roll Out Ladder is perfect for indoor speed and agility training. Made of heavy-duty, durable recycled rubber, it easily unrolls and lies flat, then rolls up for convenient transportation and storage.

### Features & Benefits

- Durable
- Anti-slip
- Quickly unrolls and lies flat
- Portable

### Specifications

Material: PU binder, Recycled rubber & Recycled EPDM  
Color: Mixed color (BS-2021)  
Thickness: 3mm or customized  
Size: 4540mm\*410mm

## Available Test Certificates

(For gym and sports flooring)  
Please contact us for further information.

| Physical Performance Testing   |   |   |
|--|---|---|
| Test   | Test Method   | Report No.  |
| Tensile strength<br>Tear strength  | ASTM D412-06a(2013) Method A<br>ASTM D624-00(2012)  | GZCCM131000781-01<br>(for BS-1000 series)   |
| Shore hardness<br>Tensile strength<br>Tear strength<br>Compression set<br>Static coefficient of friction<br>Relative volume loss | ASTM D2240-05(2010)<br>ASTM D412-06a(2013) Method A<br>ASTM D624-00(2012)<br>ASTM D395-03(2008) Method B<br>ASTM D2047-11<br>ASTM D5963-04(2010) Method A | GZCCM131000781-03<br>(for BS-2000 series)<br>GZCCM131000781-05<br>(for BS-3000 series)<br>GZCCM131000781-07<br>(for BS-5000 series)<br>GZCCM131000781-09<br>(for BS-7000 series)<br>GZCCM131000781-11<br>(for BS-8000 series) |
| Chemical Performance Testing   |   |   |
| Test   | Test Method   | Report No.  |
| SVHC   | SGS-In-House method<br>GZTC CHEM-TOP-092-01<br>GZTC CHEM-TOP-092-02   | CANMLC1406943901  |
| RoHS Directive 2011/65/EU  | IEC 62321: 2008, ICP-OES<br>IEC 62321: 2008, UV-Vis<br>IEC 62321: 2008, GC-MS   | GZ1107098567/CHEM   |
| PAHs   | ZEK 01.4-08 of German ZLS   | CANMLC1406941701  |
| PAHs   | ZEK 01.4-08 of German ZLS   | CANMLC1406942401  |
| PAHs   | ZEK 01.4-08 of German ZLS   | CANMLC1406943001  |
| Elementary Analysis  | US EPA Method 3052:1996   | CANMLC1406943601  |
| Safety Data Sheet (SDS)  | 1907/2006/EC, 1272/2008/EC  | CANMLC1408353001  |
| VOCs   | ISO 16000-9:2006 (ASTM D5116-97)  | CANMLC1317228501  |
| VOCs   | ISO 16000-9:2006 (ASTM D5116-97)  | CANMLC1317228503  |
| Determination of Benzene, Toluene, Xylene content  | With reference of SGS in-house method<br>Weight 2.0g sample to<br>headspace bottle, then heat 1hr at 100° C<br>in headspace instrument                    | GZ1107098565/CHEM   |
| Flammability Properties Testing  |   |   |
| Test   | Test Method   | Report No.  |
| NF P 92-507:2004<br>Fire safety-building-interior<br>fitting materials   | NF P 92-501:1995  | GZCCM140500496  |
| EN 13501-1:2007+A1:2009<br>Fire classification of<br>construction products<br>and building elements                              | EN ISO 11925-2:2010<br>Reaction to fire test  | GZCCM40500498   |
| 16 CFR 1630 Standard for the surface flammability<br>of Carpets and Rugs (FF 1-70)   |   | GZMR110716819   |

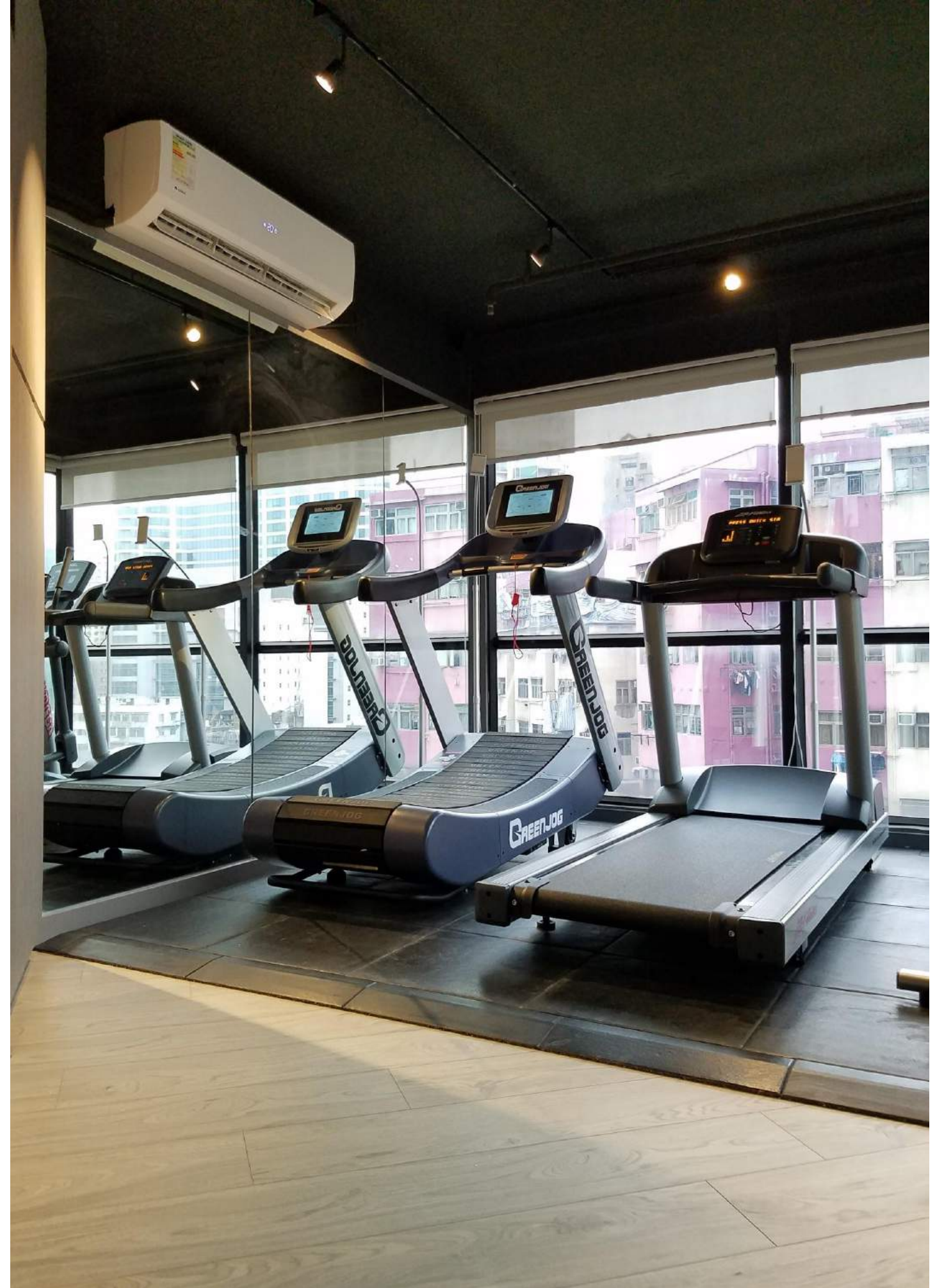






**FitnessExpert** Services Limited

Your fitness parts & products superstore  
體適能健身設備服務有限公司







**FitnessExpert** Services Limited

Your fitness parts & products superstore

體適能健身設備服務有限公司







**FitnessExpert** Services Limited

Your fitness parts & products superstore

體適能健身設備服務有限公司



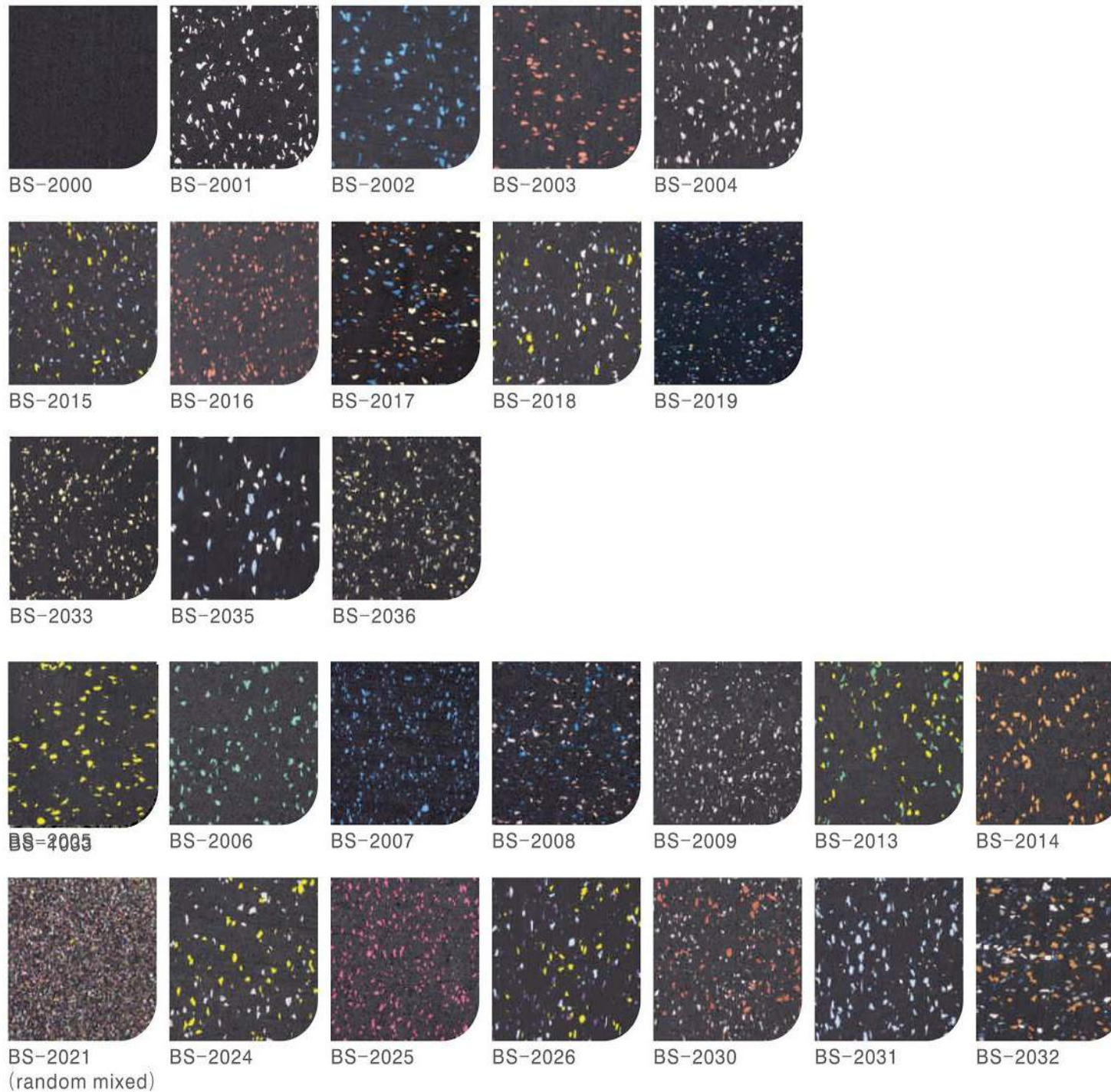
## Color Range

### Endless color combinations

Our rubber flooring is a combination of design and high walking comfort to meet the challenges of commercial and athletic environments. With various colors to choose from, you can design your own fitness floor, sports floor and set yourself apart from the competition.

For further assistance, please contact our sales team.

BS-2000 series



## Color Range